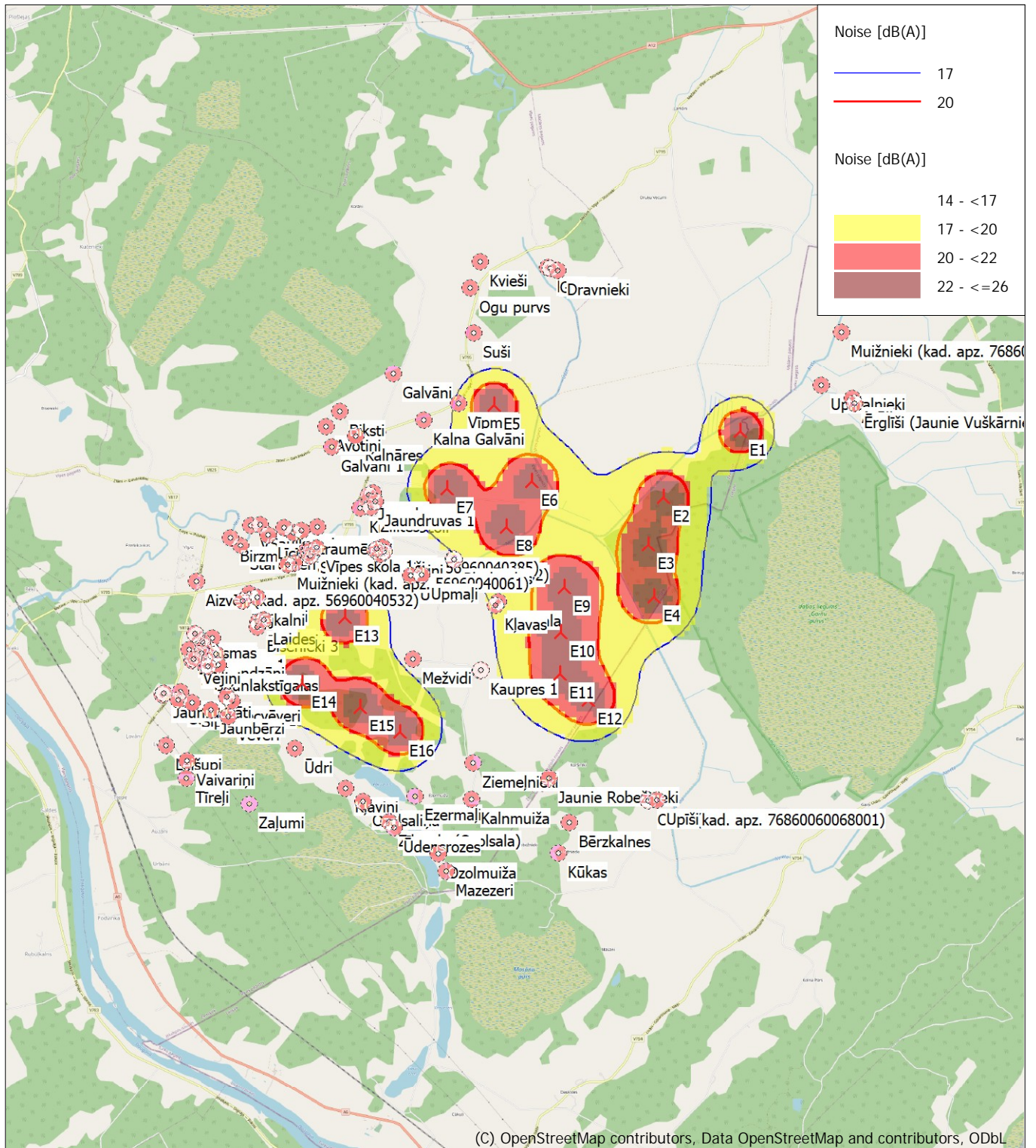



DECIBEL - Map 6.0 m/s Regular dwellings

Calculation: Siemens Gamesa SG170-7.0 MW ST E alternativa 160724



New WTG

 Noise sensitive area



Noise calculation model: Danish low frequency 2019. Wind speed: 6.0 m/s Regular dwellings
Height above sea level from active line object

ZFT E alternativa Mezares

SIA Estonian, Latvian & Lithuanian environment
Vilandes 3-6
LV-1010 Riga
0037167242411
Kristiana / kristiana@environment.lv
Calculated:
16/07/2024 7:58 pm/4.0.540

Calculation: Siemens Gamesa SG170-7.0 MW ST E alternativa 160724



Map: EMD OpenStreetMap , Print scale 1:75,000, Map center Latvian TM LKS92-LKS92 (LV) East: 633,280 North: 259,862
 New WTG  Noise sensitive area
 Noise calculation model: Danish low frequency 2019. Wind speed: 8.0 m/s Regular dwellings
 Height above sea level from active line object